

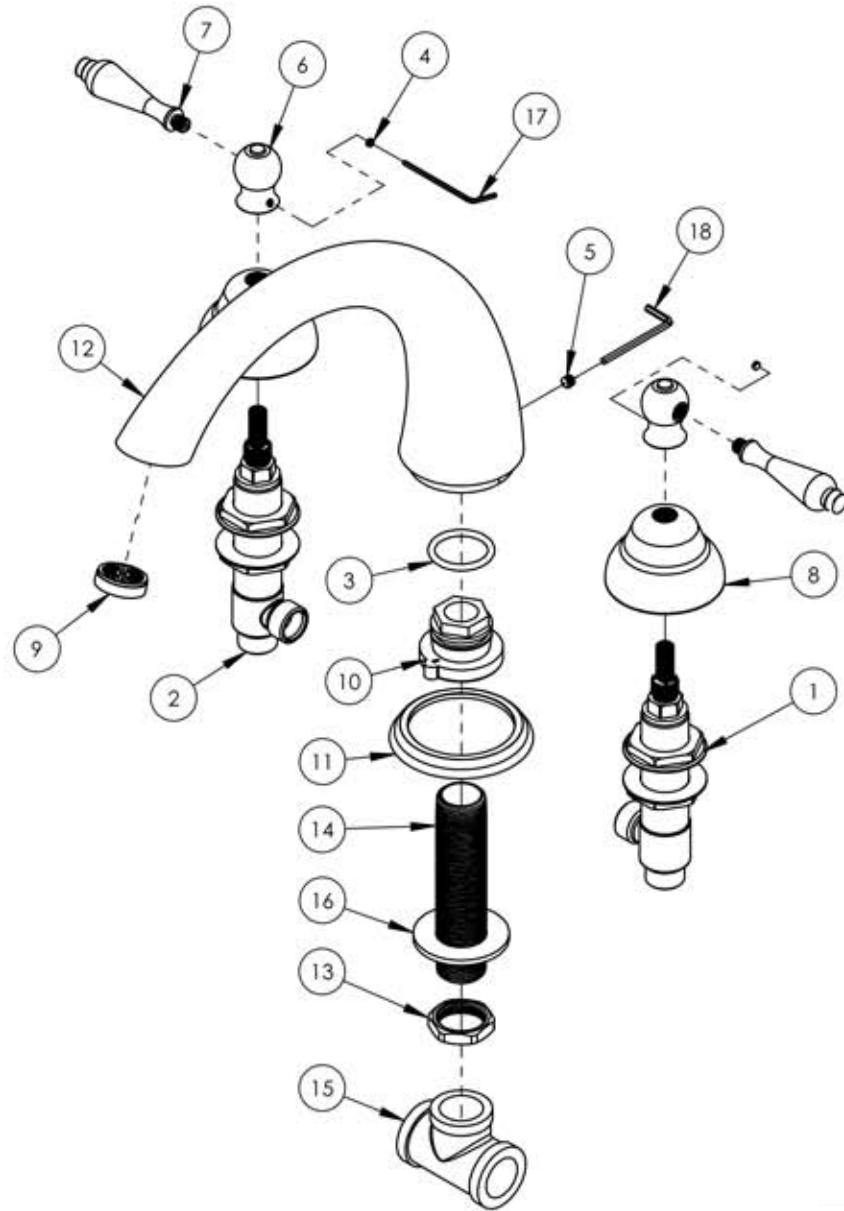
A

B

C

D

E



ITEM NO.	PART NUMBER	DESCRIPTION	QTY.
1	1-109	WIDESPREAD VALVE COLD LAV 16PT	1
	10716	VALVE BODY, WIDESPREAD LAV	1
	10248	INTERNAL SEAT FOR WIDESPREAD	1
	90013	O-RING, 7/16"ID X 9/16"OD X 1/16"THK, AS-568-013	1
	10235	CARTRIDGE, VALVE 1/2"G W/ 16PT COLD LEAD FREE	1
	92037-BL	NUT, FLANGED 1"-20 THREAD	2
2	1-110	WIDESPREAD VALVE HOT LAV 16PT	1
	10716	VALVE BODY, WIDESPREAD LAV	1
	10248	INTERNAL SEAT FOR WIDESPREAD	1
	90013	O-RING, 7/16"ID X 9/16"OD X 1/16"THK, AS-568-013	1
	10236	CARTRIDGE, VALVE 1/2"G W/ 16PT HOT LEAD FREE	1
	92037-RD	NUT, FLANGED 1"-20 THREAD	2
3	90530	O-RING, 1 1/8"ID X 1 5/16"OD X 1/8"THK, 9555K34	1
4	92163	SET SCREW, CONE PT 8-32 X 1/8"L	2
5	92191	M6X1.0 -6MM L	1
6	P01031/00	K160 D100 BALL FOR HANDLE, HUB	2
7	P01032/00	K160 LEVER FOR HANDLE	2
8	P02004/00	K190X2 COVER PLATE	2
9	P05003	AERATOR F/DECK & WALL SPOUT	1
10	P27018	DECK SPOUT ADAPTER, W/ 3/4 NPT	1
11	P27019/00	K1120L SPOUT BASE	1
12	P27020/00	K5120 DECK SPOUT	1
13	P28022	NUT, 3/4" NPSL	1
14	P28024	NIPPLE SHANK, 3/4" NPT-NPSM-NPT X 4.5"L	1
15	P28025	3/4" BRASS TEE F/DECK VALVE	1
16	P35317	S.S. WASHER O.D 2" I.D 1" 1/16	1
17	P39001	5/64 HEX KEY	1
18	P39005	3MM HEX KEY	1

ZONE	REV.	DESCRIPTION	DATE	APPROVED
REVISIONS				
<b>PHYLORICH®</b>				
Defining Luxury Since 1959				

**PROPRIETARY AND CONFIDENTIAL**  
 THE INFORMATION CONTAINED IN THIS DRAWING IS THE SOLE PROPERTY OF RSS MANUFACTURING. ANY REPRODUCTION IN PART OR AS A WHOLE WITHOUT THE WRITTEN PERMISSION OF RSS MANUFACTURING IS PROHIBITED.

INTERPRET GEOMETRIC DIMENSIONING & TOLERANCING IN ACCORDANCE WITH ASME Y14.5-2009 & ASME Y14.41-2003 STANDARDS. UNLESS OTHERWISE SPECIFIED, DIMENSIONS ARE IN INCHES. TOLERANCES ARE:	FRACTIONS ±1/64"	DECIMALS X.X: ±.1 X.XX: ±.01 X.XXX: ±.005	ANGULAR ±.5°
NEXT ASSY	USED ON	APPLICATION	
MATERIAL	FINISH	DRAWN	CHECKED
<b>DO NOT SCALE DRAWING</b>			

**ROMAN TUB SET, REVERE & SAVANNAH SERIES, STRAIGHT LEVER (100-40/00)**

SIZE	ASM/PRT NO.	REV
<b>A</b>	D1200T/00	
SCALE: 1:4	WEIGHT: lbs.	SHEET 1 OF 2

5

4

3

2

1